

PLUMBING FIXTURE SCHEDULE					
SYM	DESCRIPTION	COLD	HOT	WASTE	VENT
P-1	WATER CLOSET (FT)	1/2"	---	3"	2"
P-2	OVAL SINK	1/2"	1/2"	1-1/2"	1-1/2"
P-3	BATHTUB/SHOWER	1/2"	1/2"	2"	2"
P-4	KITCHEN SINK	1/2"	1/2"	2"	1-1/2"
P-5	DISHWASHER	---	1/2"	3/4"	---
P-6	CLOTHES WASHER VALVE BOX	1/2"	1/2"	2"	1-1/2"
P-7	WATER HEATER (50 Gal., 4.5kw, 240/1Ø)	1"	1"	---	---
P-8	REFRIGERATOR VALVE BOX	1/2"	---	---	---
P-9	HOSE BIBB	3/4"	---	---	---

- P-1 Water Closet (Flush Tank): American Standard 215CA.004 Cadet Pro Elongated toilet. Includes 3517C.101 toilet bowl, 4188A.004 tank and 5325.010 seat. 1.6 gallons per flush. Install with angle stop. Provide "white" color selection for china.
- P-2 Oval Sink: Proflo PF20174WH bath sink with PFWS3016CP single-lever mixing faucet with 5 gpm vandal resistant aerator, grid strainer, loose key stops and trap with tailpiece. Install handle limit stop kit within single lever mixing faucet to limit outlet hot water supply temperature to 110°F.
- P-3 Bathtub/Shower Combo: Aquatic 2603CTW/WP (60"x32"x72") bathtub/shower fixture. Provide with Moen-M62380 mixing valve with MTL183 trim. Provide with manufacturer installed backing for future grab bars. Verify right/left configuration with architectural plans. Coordinate rough-in opening size with General Contractor prior to work commencing.
- P-4 Kitchen Sink (Double Bowl with Garbage Disposer): Dayton DSE-23322-4 stainless steel sink with LK-35 basket strainer in right bowl. Provide trap, tailpiece and angle stops. Install ISE Badger, 1/2 HP, 120volt continuous feed garbage disposer with pigtail, insulated outer shell, plastic grind chamber, stainless steel grinding elements, dishwasher drain connection, overload protector manual reset, anti splash baffle, and four year warranty. Install disposer in left bowl. Provide Moen 7430 swivel gooseneck faucet with side spray. Provide five year warranty on garbage disposer.
- P-5 Dishwasher: Connect 3/4" waste line from dishwasher to tailpiece of nearby sink.
- P-6 Clothes Washer Valve Box: Symmons LaundryMate No. W-602.
- P-7 Water Heater (50 Gallon, 4.5 Kw, 240 Volt, 1 Phase): A.O. Smith DSE-50, 50 gallon glass-lined tank. 4.5 kw, 240 volt/1 phase, 49 GPH recovery at 100 °F rise, T&P relief valve, ASHRAE standard insulation, 120 volt control circuit and incoloy immersion heaters.
- P-8 Refrigerator Valve Box: Water Tite Model 9000 ice maker valve box.
- P-9 Hose Bibb: Woodford No. 65, auto-draining with vacuum breaker, loose key stops and barrel length to suit wall construction.

1 FIXTURE SPECIFICATION IS A BASE FOR BIDS. COORDINATE FINAL FIXTURE SELECTION WITH ARCHITECT PRIOR TO CONSTRUCTION.

FAN COIL UNIT SCHEDULE																			
NO.	TYPE	CFM	HP	CHAR	SPE	ELECTRIC HEATING			MBH	S/T	COOLING			FRESH AIR CFM	WEIGHT	FAN COIL MANUFACTURER	HEAT PUMP UNIT MODEL #		
						KW INPUT	ENT AIR	LVG AIR			ENT AIR	LVG AIR	OUTDOOR AIR						
1	UPFLOW	800	1/4	240/1Ø	.40"	7.5	60'	90'	21.5	1	80	62	58	53	95'	30	90#	'BRYANT' FFMA 024	'BRYANT' 113A - 024
2	UPFLOW	1000	1/3	240/1Ø	.40"	7.5	60'	76'	25.9	1	80	62	58	53	95'	45	110#	'BRYANT' FFMA 030	'BRYANT' 113A - 030

- 1 PROVIDE WITH FUSIBLE ELECTRIC HEATERS THAT ARE TO BE FIELD INSTALLED.
- 2 OR APPROVED ALTERNATE MANUFACTURER.

CONDENSING UNIT SCHEDULE									
NO.	EVAP CFM	MCA	CHAR	MBH	ENT AIR	SEER	REFRIGERANT	WEIGHT	MANUFACTURER
1	800	14.8	240/1Ø	21.5	95'	13.0	R-410A	110#	'BRYANT' 113A - 024
2	1000	16.8	240/1Ø	25.9	95'	13.0	R-410A	111#	'BRYANT' 113A - 030

- 1 MECHANICAL CONTRACTOR TO VERIFY ELECTRICAL CHARACTERISTICS WITH ELECTRICAL CONTRACTOR PRIOR TO ORDER.
- 2 OR APPROVED ALTERNATE MANUFACTURER.

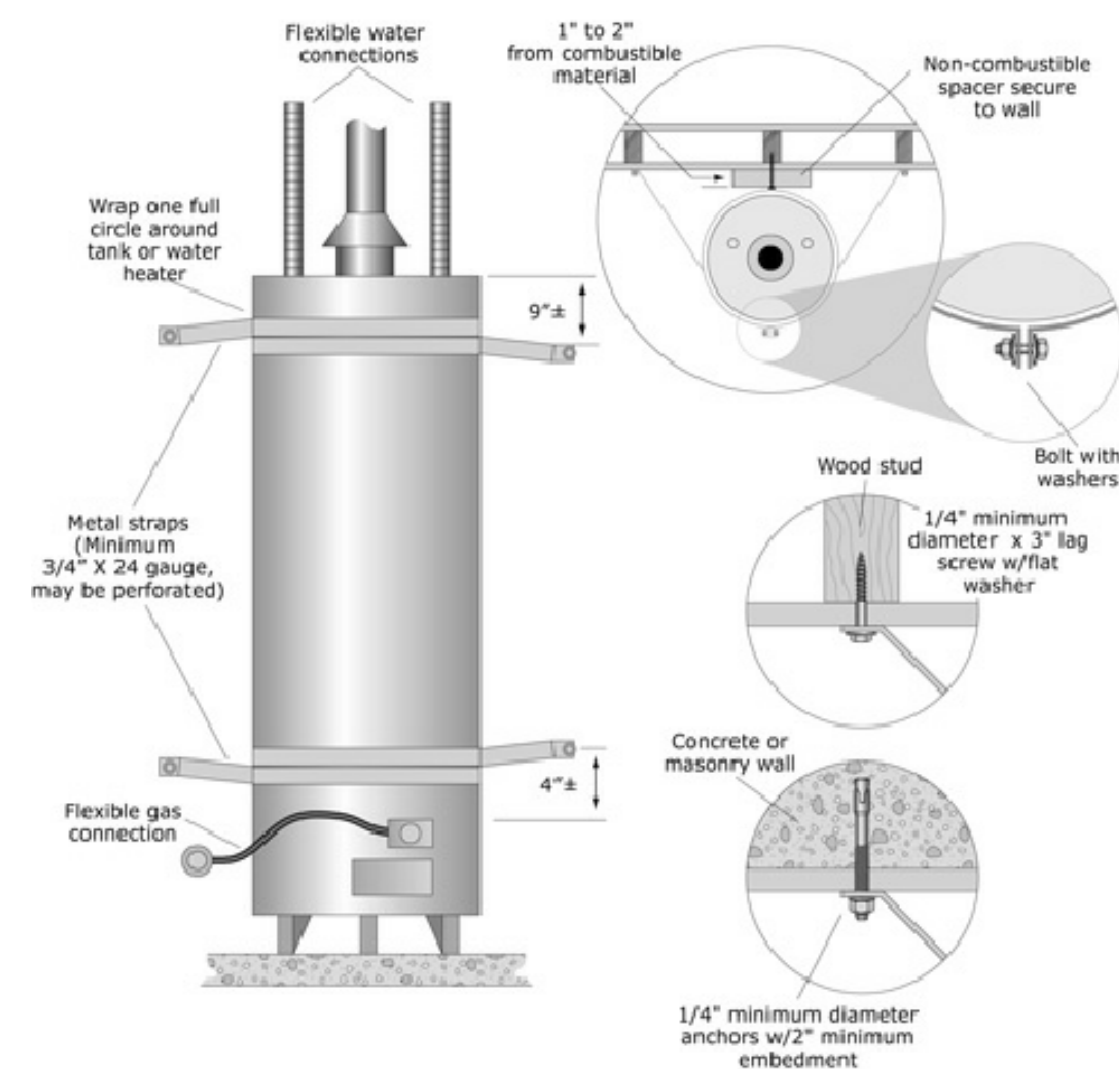
EXHAUST FAN SCHEDULE									
NO.	TYPE	CFM	SPE	WATTS/HP	CHAR	RPM	WEIGHT	MANUFACTURER	REMARKS
1	CEILING CENTRIFUGAL	60	.25"	44W	120/1Ø	1500	---	'BROAN' AE80L	1

- 1 EXHAUST FAN OPERATION TO BE CONNECTED TO RESTROOM LIGHT SWITCH.

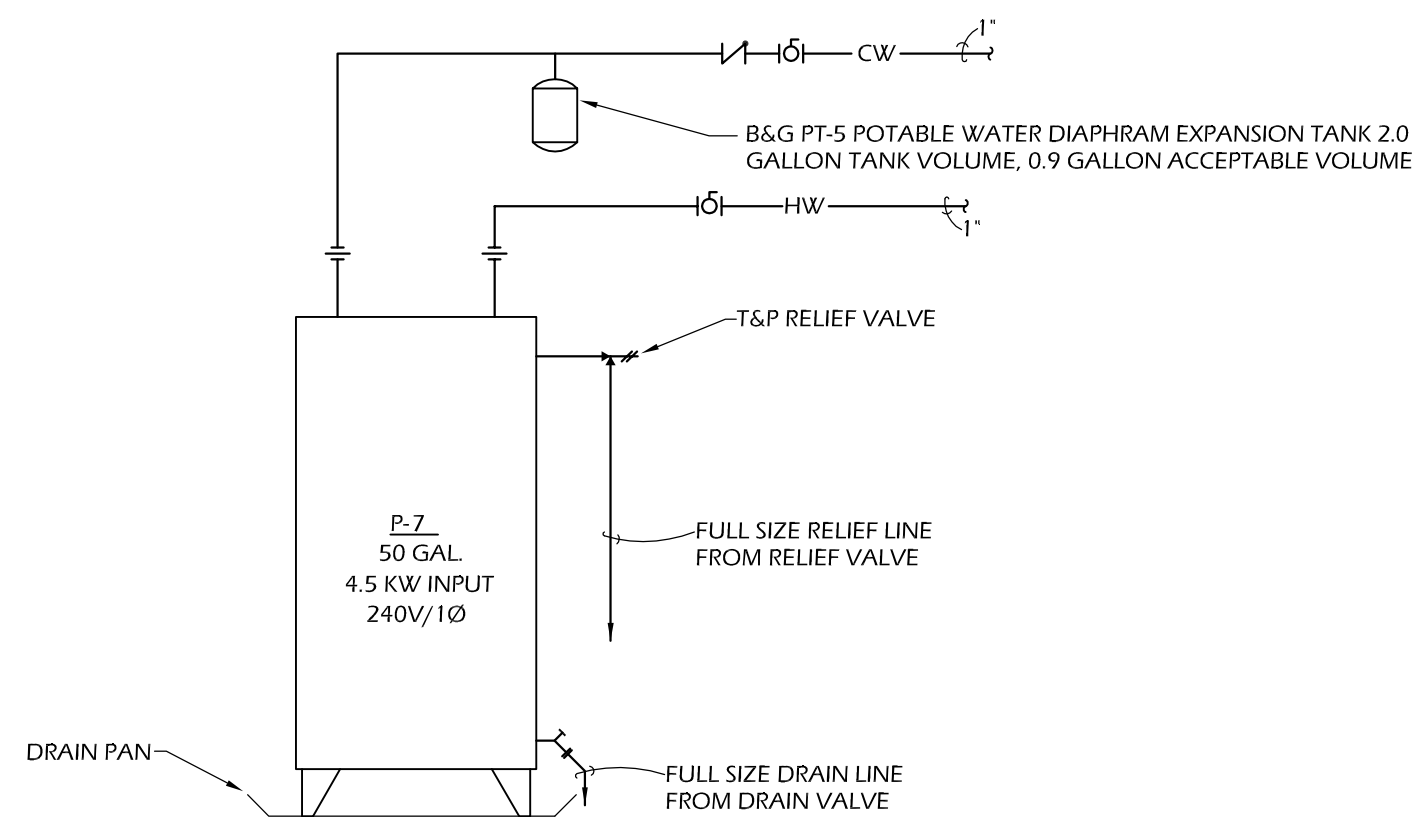
GRILLE AND REGISTER SCHEDULE			
SYMBOL	DESCRIPTION	TYPE	FINISH
CD	CEILING DIFFUSER	'HART&COOLEY' 684	OFF WHITE
SSG	SIWALL SUPPLY GRILLE	'HART&COOLEY' 94A	OFF WHITE
SRG	SIWALL RETURN GRILLE	'HART&COOLEY' 650	OFF WHITE

DRAWING LEGEND	
SHEET	DRAWING TITLE
M1.00	MECHANICAL COVER SHEET
M2.00	HVAC PLAN
M3.00	WASTE PLAN
M4.00	PLUMBING PLAN
M5.00	SPECIFICATION SHEET
M6.00	ENERGY SHEET

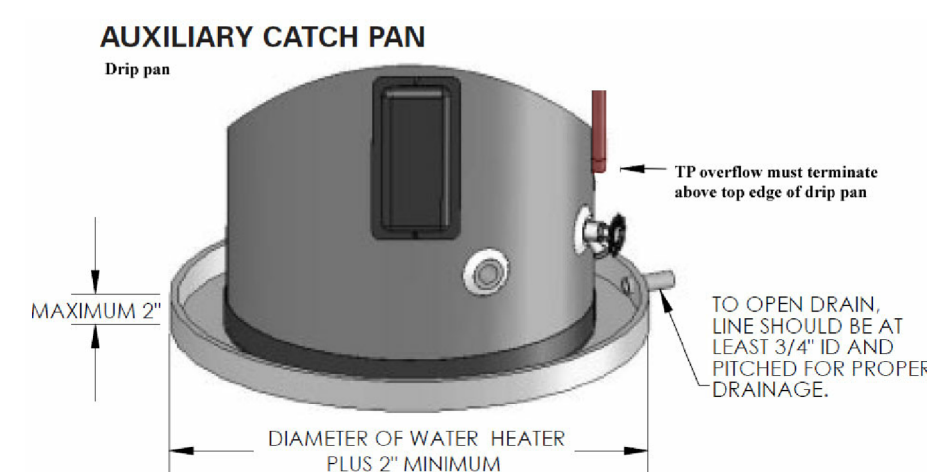
MECHANICAL LEGEND	
SYMBOL	DESCRIPTION
Ⓢ	THERMOSTAT
▷	FIRE DAMPER - ONE HOUR
▷	FIRE/ SMOKE DAMPER - ONE HOUR
▷	SMOKE DAMPER
Ⓜ	MOTORIZED DAMPER
⊘	CONICAL SPIN IN FITTING WITH HAND DAMPER
⊙	ROUND CEILING DIFFUSER
⊠	CEILING DIFFUSER
⊠	RETURN GRILLE
⊠	EXHAUST GRILLE
⊠	SUPPLY DUCT
⊠	RETURN DUCT
⊠	EXHAUST DUCT
⊠	FLEX DUCT
⊠	EQUIPMENT CALLOUT



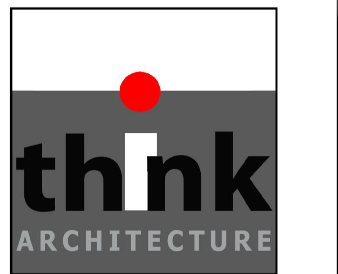
B WATER HEATER SECURE STRAP DETAIL  
M100 SCALE: NTS



A WATER HEATER DETAIL  
M100 SCALE: NTS

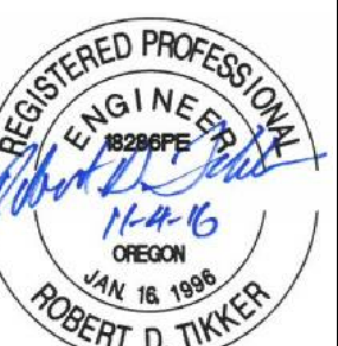


C WATER HEATER PAN DETAIL  
M100 SCALE: NTS



1529 Columbia Park Trail  
Suite B312  
Richland, WA 99352  
p: 208.850.7180

NEW DEVELOPMENT  
THE 27 ELM  
A HUNTER RENAISSANCE DEVELOPMENT  
REDMOND OREGON



MECH COVER SHEET

AS NOTED

Scale

1602

Project Number

NOVEMBER 8, 2016

Date

M100 - MECH COVER SHEET.DWG

File Name

Revisions

M1.00